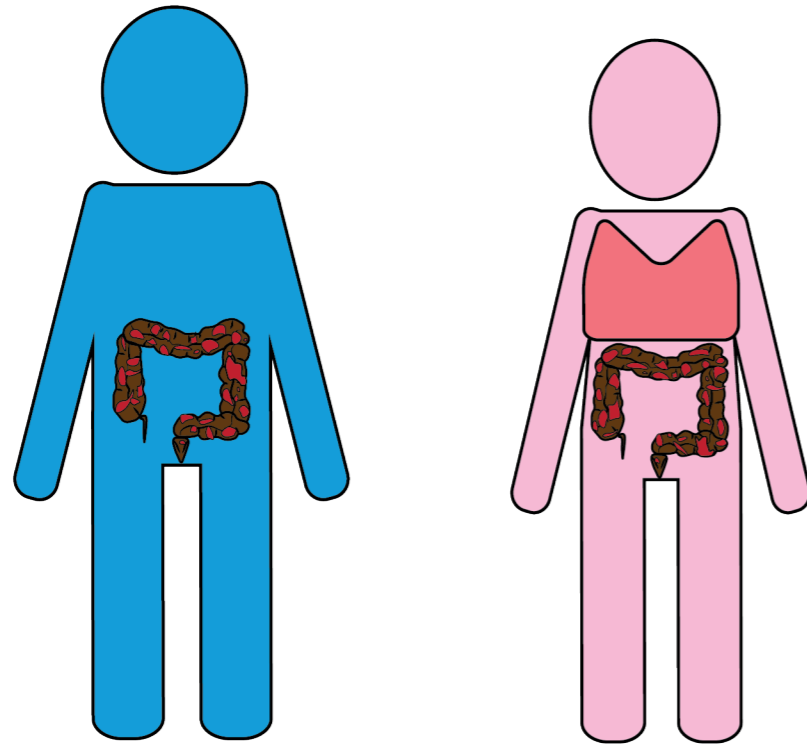


# Polyposis (FAP, AFAP en Peutz-Jeghers)

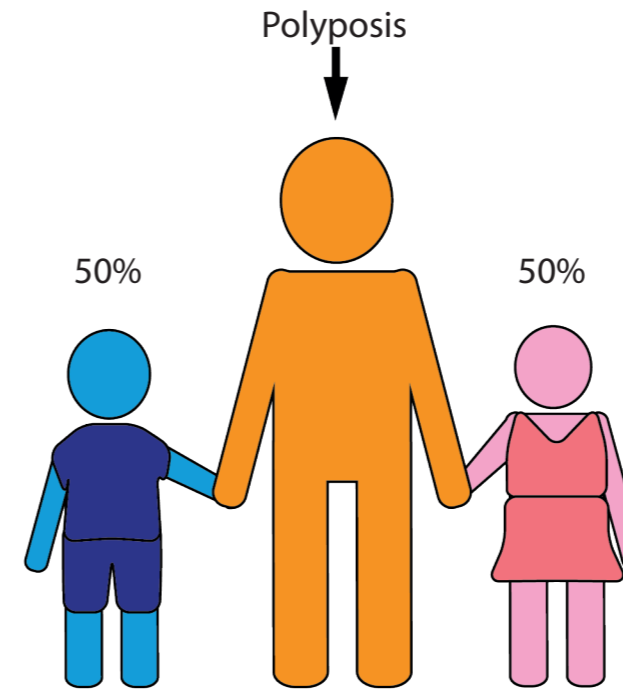
Hoge kans op kanker



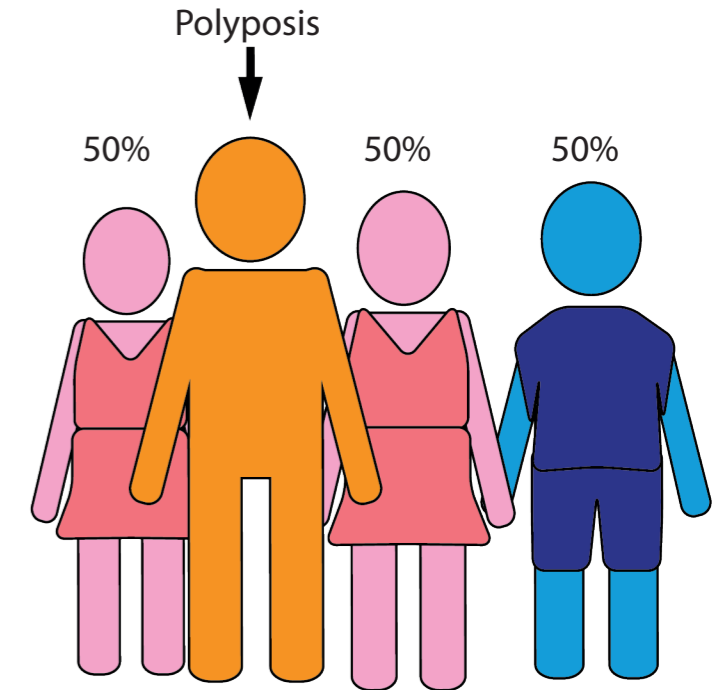
Darm

Darm

Risico voor familieleden 50%

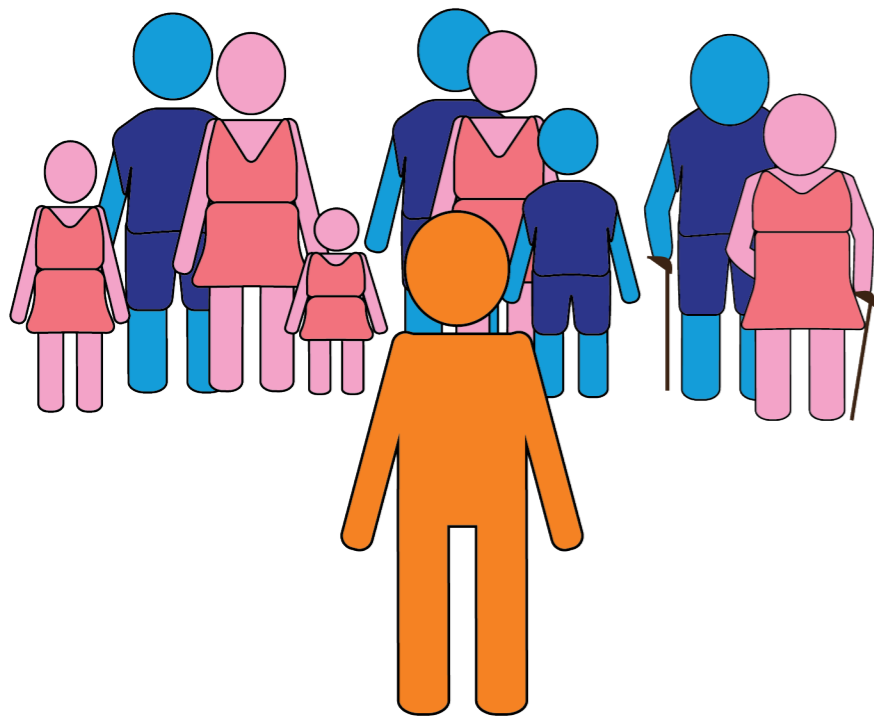


Kinderen

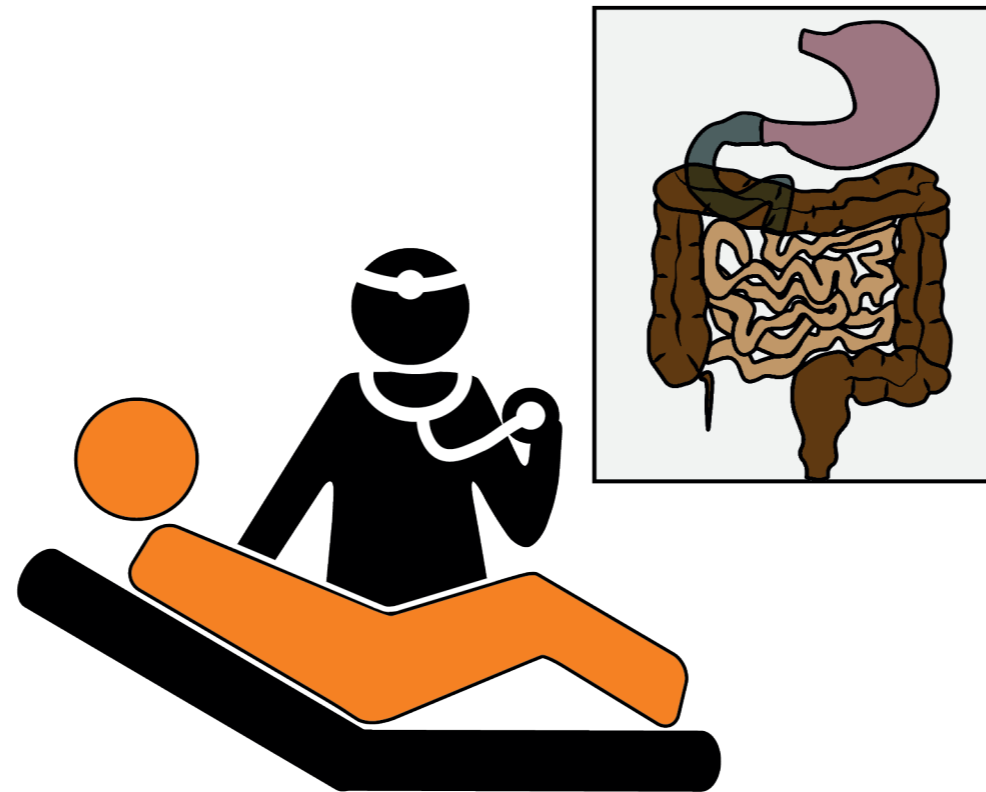


Broers en zussen

Vertel het je familie



Controles



Meer informatie



 Lynch  
Polyposis

[lynch-polyposis.nl](http://lynch-polyposis.nl)